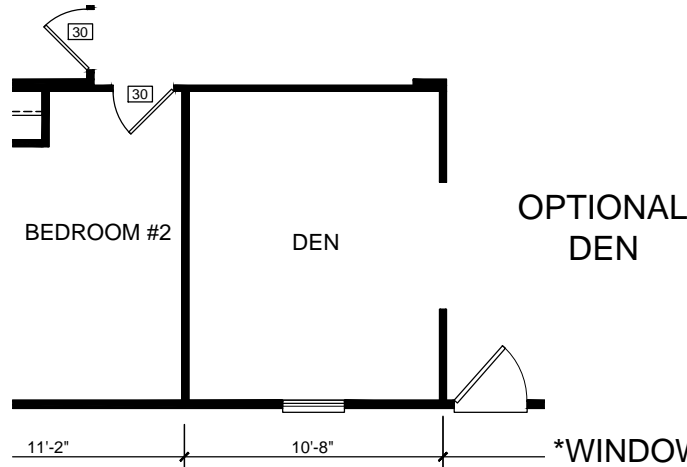


SM-08-5027 1307 SQ. FT. (50'-0"/48-0" x 26'-8")



\*WINDOW SIZES SUBJECT TO CHANGE-8/3/15

**Silvercrest** CHAMPION  
 MANUFACTURED BEAUTIFULLY™  
 299 N. Smith Ave., Corona CA 92880

PROPRIETARY AND CONFIDENTIAL  
 THESE DRAWINGS AND SPECIFICATIONS ARE ORIGINAL,  
 PROPRIETARY AND CONFIDENTIAL MATERIALS OF  
 CHAMPION HOME BUILDERS INC.  
 COPYRIGHT © 1976-2015 BY CHAMPION

APPROVER'S SEAL

MODIFICATIONS

3-SEE REV. LOG	JEN 04-30-12
4-SEE REV LOG	BMS 5-13-14

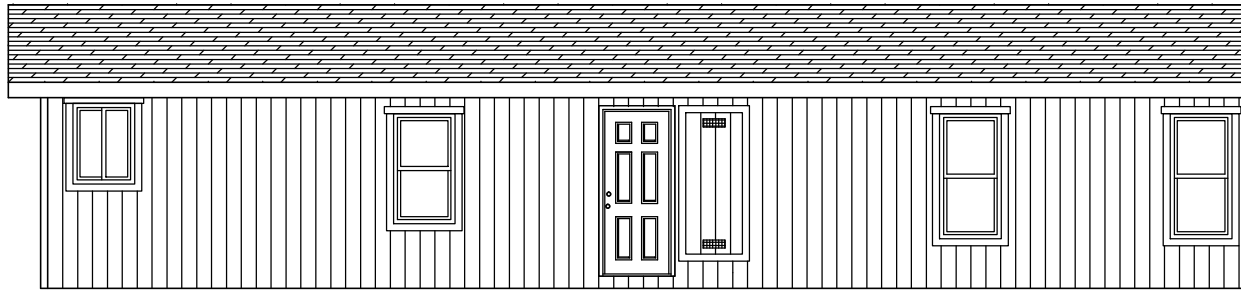
MODEL: **SM-08-5027**  
 50/27-3BR

TITLE: **LITERATURE PLAN**

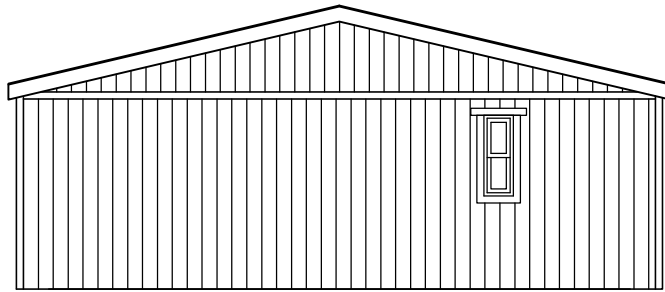
DATE: 12-16-11	SCALE: 1/8" = 1'-0"	FILENAME:
DRAWN BY: BMS	CHECKED BY:	SM-08-5027-LT101

SHEET NO.: **LT-101**

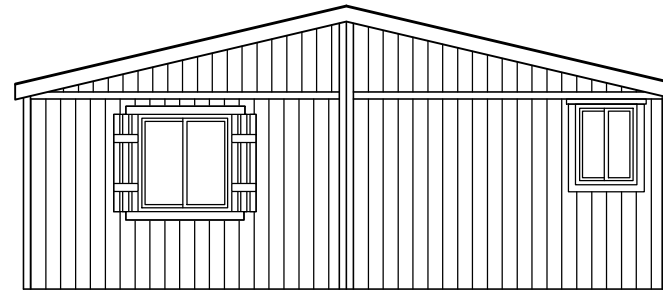
PAGE: **1 OF 1**



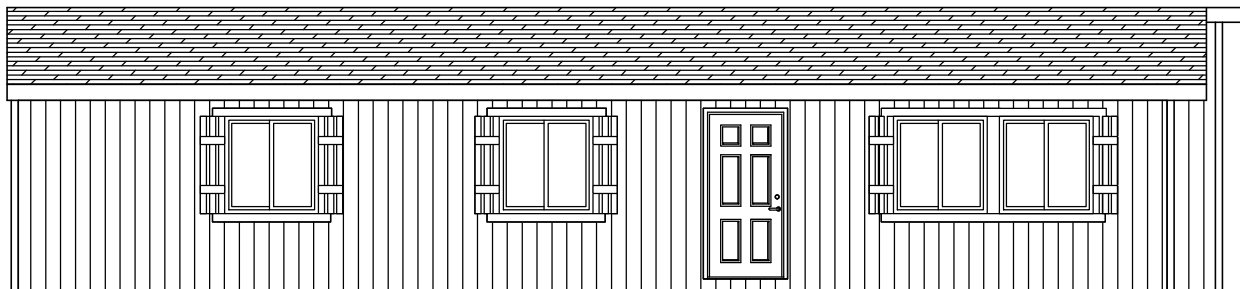
RIGHT



REAR



FRONT



LEFT



299 N. Smith Ave., Corona CA 92880

PROPRIETARY AND CONFIDENTIAL  
 THESE DRAWINGS AND SPECIFICATIONS ARE ORIGINAL.  
 PROPRIETARY AND CONFIDENTIAL MATERIALS OF  
 CHAMPION HOME BUILDERS INC.  
 COPYRIGHT © 1976-2015 BY CHAMPION

APPROVER'S SEAL

MODIFICATIONS

2-SEE REV LOG  
 4-SEE REV LOG  
 5-SEE REV LOG

DJM 3-2-12  
 BMS 5-13-14  
 AG 2-27-15

MODEL:

SM-08-5027

50/27-3BR

TITLE:

ELEVATIONS - STD

SHEET NO.:

AE-101

DATE: 12-16-11

SCALE: 1/8" = 1'-0"

FILENAME:

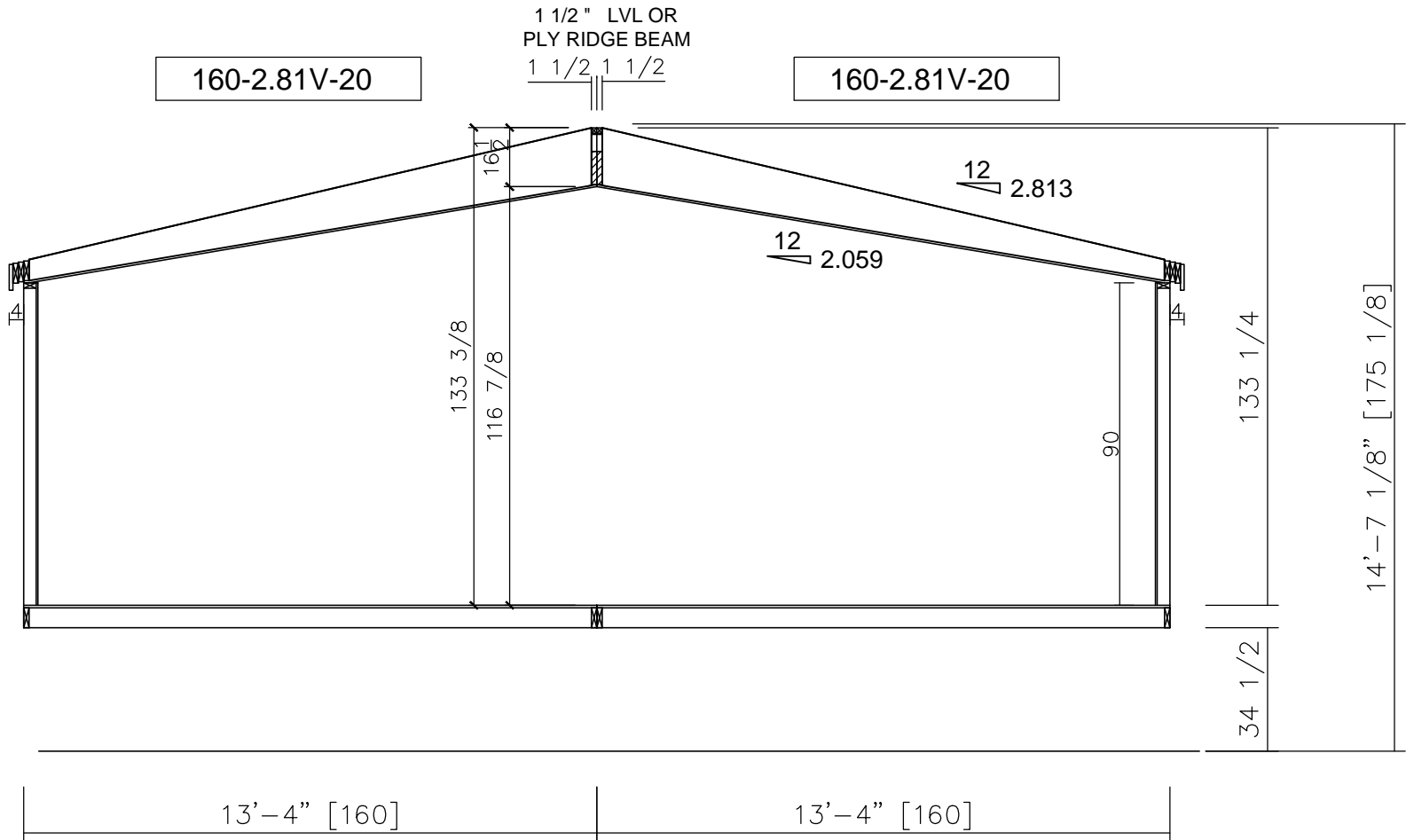
PAGE:

DRAWN BY: BMS

CHECKED BY:

SM-08-5027-LT101

1 OF 1



160-2.81V-20

160-2.81V-20

1 1/2" LVL OR  
PLY RIDGE BEAM  
1 1/2 1 1/2

12 2.813

12 2.059

133 3/8  
116 7/8

90

133 1/4

14'-7 1/8" [175 1/8]

34 1/2

13'-4" [160]

13'-4" [160]

**Silvercrest** CHAMPION  
MANUFACTURED BEAUTIFULLY™  
299 N. Smith Ave., Corona CA 92880

PROPRIETARY AND CONFIDENTIAL  
THESE DRAWINGS AND SPECIFICATIONS ARE ORIGINAL,  
PROPRIETARY AND CONFIDENTIAL MATERIALS OF  
CHAMPION HOME BUILDERS INC.  
COPYRIGHT © 1976-2015 BY CHAMPION

APPROVER'S SEAL

MODIFICATIONS  
4-SEE REV LOG BMS 5-13-14

MODEL: SM-08-5027  
50/27-3BR  
TITLE: CROSS SECTION  
DATE: 12-16-11 SCALE: 1/4" = 1'-0" FILENAME: SM-08-5027-LT101  
DRAWN BY: BMS CHECKED BY:

SHEET NO.: AS-101  
PAGE: 1 OF 1